

Refurbishment

# Private Hospital in Bury St Edmunds

A Private Hospital in Bury St Edmunds, owned by Circle Health Group, has recently completed work to modernise and refurbish the operating theatres.



SDS worked closely with Kirbys Construction Limited to supply Shielddoor<sup>®</sup>, our lead lined range of doorsets, to replace the hospital's existing theatre doors.

**"The replacement theatre doors, were installed over a number of weekends to minimise the hospital's downtime.**

**All credit to SDS for the bespoke vision panels, integrating the x-ray and laser warning lights."**

*Circle Health Group*



Solution  
**Shielddoor**



Location  
**Operating  
Theatres**



Finish  
**Snowflake with  
Cobble Frame**



Contractor  
**Kirbys  
Construction**



The doorsets were specifically designed and optimised to meet the demanding requirements of the refurbished operating theatres and include Priviglaze+ – our combined warning light/vision panel that neatly combines two products into one.

Priviglaze+ is positioned directly onto the door, in the line of sight, thus ensuring best and safe practice. It effectively removes the need for a separate vision panel and warning light and provides a very competitive priced alternative.

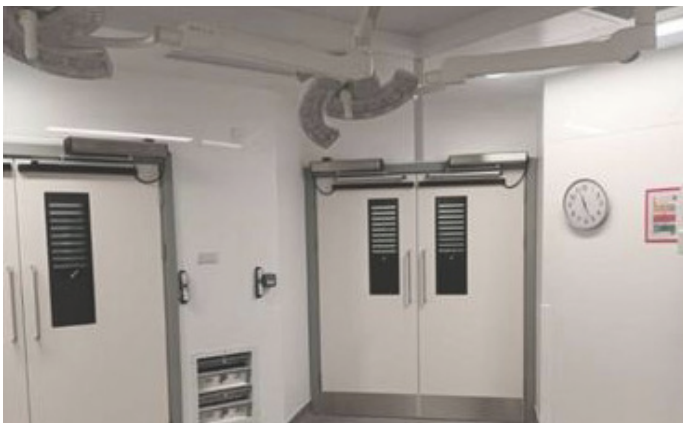
The doors will provide optimum impact and damage resistance in high-traffic and high-wear environments.

**“SDS have provided an excellent service from the quotation stage to the delivery of 22 doorsets, along with keeping myself updated throughout the process, is commendable.**

**It’s also encouraging to know that the SDS staff exhibited quality workmanship, and found their products to be outstanding.**

**Providing consistent quality and maintaining good communication are essential aspects of any successful business. ”**

*Keith Jarvis, Director, Kirbys Construction*



**For further information, contact:**

**T 01420 543222**

**E [sales@specialistdoorsolutions.com](mailto:sales@specialistdoorsolutions.com)**