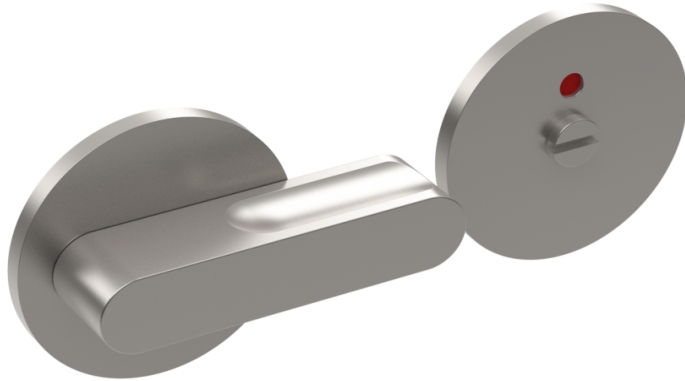

1111-CN Define Copper Bathroom turn/release



CODE	1111-CN	PROFILE	n/a
FINISH	Copper Nickel		
KEY FEATURES	<ul style="list-style-type: none"> • Solid 70 - 30 Copper Nickel alloy • Continuously kills 99.9% of harmful bacteria • Maintains clinical aesthetic of stainless steel • Antibacterial properties work 24/7, never wears away • Fire tested to BS476 FD60 		
TECHNICAL	<ul style="list-style-type: none"> • 52mm Diameter Rose • 4mm Thick Rose 		